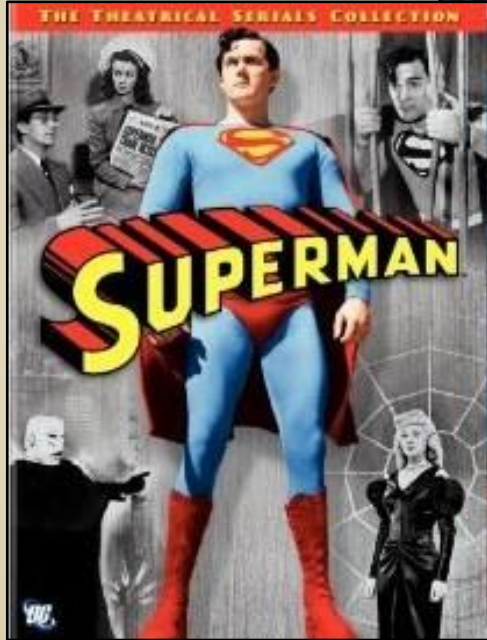


Superman Episodes in Chatsworth



Looking back ten years

- Tonight we are showing the first Chapter of the 1948 Movie Serial **Superman**, starring **Kirk Alyn**.
- We showed the same episode ten years ago, and were honored to have Kirk's grandson, **Brian Keller**, and his family join us.



Feb 2013 Homestead Acre Superman program
The Kirk Alyn family: back-Brian Keller, Jennifer, Liz
front-Summer

A Thank You to our Chatsworth Movie Historians

- Included in this presentation are some contributions from the following individuals
- Jerry England - website at a-drifting-cowboy.blogspot.com. This site is searchable, and has over **600 posts** relating to movie sites in and around Chatsworth
 - **Jerry shared photos of Kirk Alyn from his photograph collection**
- Dennis Liff – website at iversonmovieranch.blogspot.com. This site is searchable, and has over **400 posts** relating to movie sites in and around Chatsworth
 - An Interactive Map of Filming sites at <https://iversonmovieranch.blogspot.com/search?q=interactive>
 - **Dennis provided details of the shooting locations and rock structures identified in some of the Superman scenes filmed in Chatsworth.**

Introduction

- This presentation will cover the following items. Our focus tonight is on the 1948 and 1950 Superman movie serials starring Kirk Alyn. Twenty-nine of the 30 movie serial chapters have scenes filmed in Chatsworth.
 - A brief history of movie serials, aka “**Cliffhangers**”.
 - **History of Superman** from comics to radio to movie serials to TV to big budget movies.
 - **Kirk Alyn** photographs from the **Jerry England** collection
 - We have posted **58 clips of Superman episodes filmed in Chatsworth** (under 5 minutes each) on our **YouTube** channel. We will share screenshots of some of the scenes, with shooting locations and rock descriptions provided by **Dennis Liff**.
 - Viewing of Chapter 1 of **1948 Superman**, followed by the beginning of Chapter 2.

Movie Serial History

- Movie serials date back to the silent era, with *The Perils of Pauline* (1914), *The Exploits of Elaine*, and *The Hazards of Helen* (119 12 minute episodes from 1914-17).
- *Flash Gordon* was a 1936 movie serial with 13 episodes, featuring Buster Crabbe on the Planet Mongo. It was reissued as *Rocketship* in 1949.



1914 The Perils of Pauline



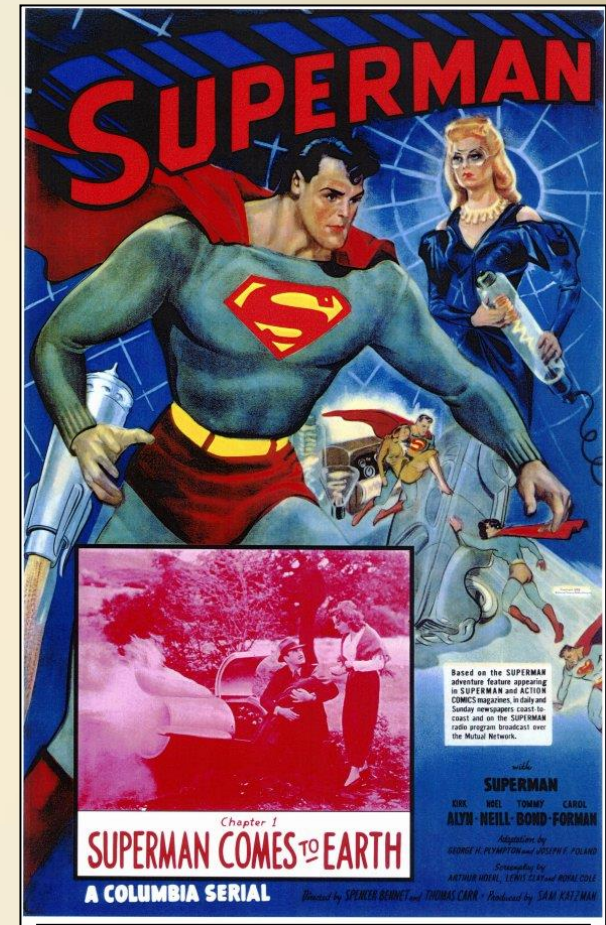
1936 Flash Gordon



1948 Superman Movie Poster

Movie Serial History

- The movie serial or chapter play, was a popular motion picture form during the 1930's to 1950's.
- Each chapter was screened at a movie theater for one week, and ended with a **cliffhanger**, in which characters found themselves in perilous situations with little apparent chance of escape.



1948 Superman Movie Poster



1950 Atom Man vs Superman

Movie Serial History

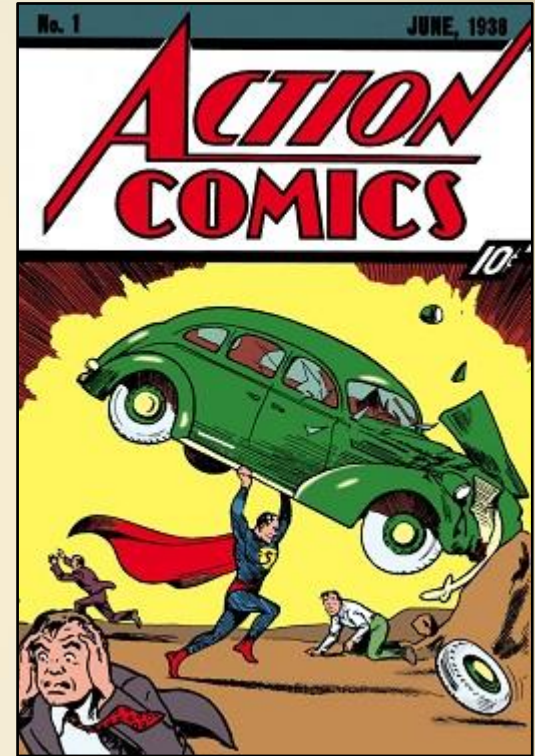
- Viewers had to return each week to see the cliffhangers resolved and to follow the continuing story.
- Movie serials were especially popular with children, and for many youths in the 30's to the 1950's, a typical Saturday matinee at the movies included at least one chapter of a serial, along with animated cartoons, newsreels, and two feature films.



1948 Superman

History of Superman

- Superman is a superhero who first appeared in DC Comics, *Action Comics* #1, in 1938
- Radio - From 1940 to 1951 the radio show *Adventures of Superman* ran for 2,088 episodes, a five-a-week, 15-minute series.
- Film, *Animated Shorts* – From 1941 to 1943, 17 animated episodes were made, each 8 to 10 minutes long. The episodes are on [YouTube](#). The first episode begins with the well known phrase, “Up in the sky, look! It’s a bird, it’s a plane, it’s Superman”.
- Film, *Live Action Movie Serials* – 1948 and 1950, Kirk Alyn as Superman, 15 chapters each year totaling 30.
- Television, *Adventures of Superman* – 1952 to 1958, George Reeves as Superman, a total of 104 episodes.
- *Big-budget movies* – 1978 to 1987, Superman, Superman II, III and IV, Christopher Reeve as Superman

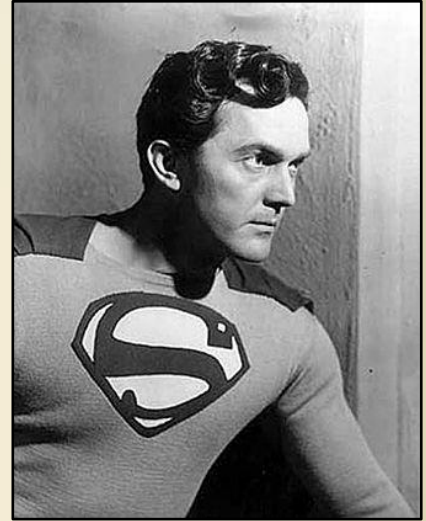


Superman Episodes Filmed in Chatsworth

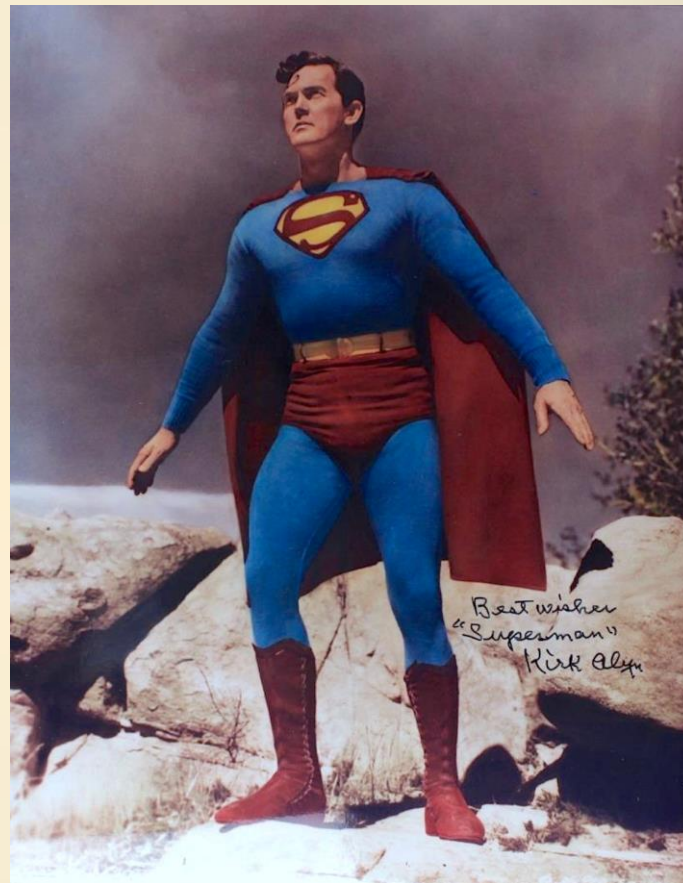
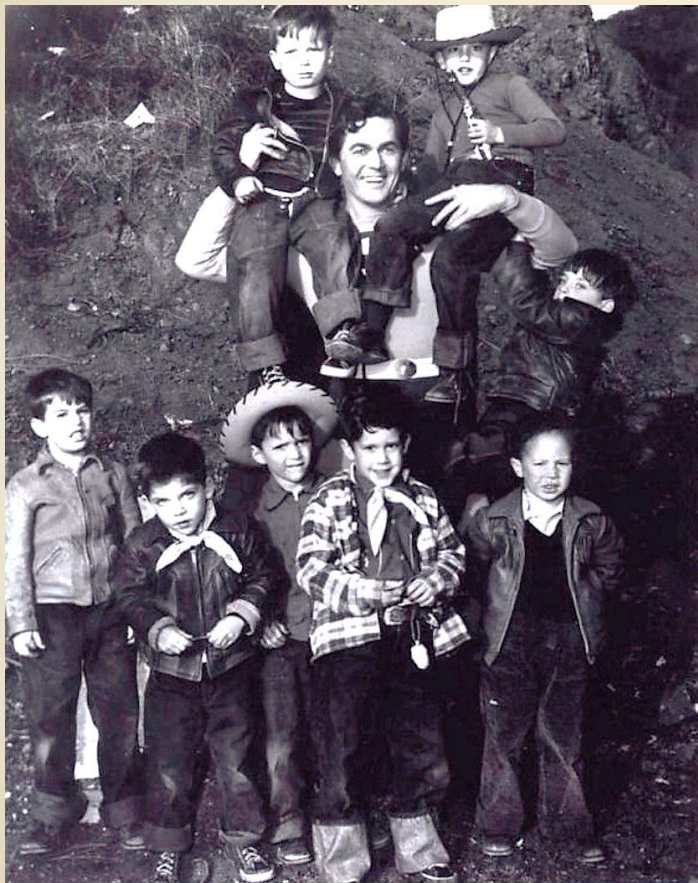
- The 1948 movie serial *Superman* portrayed **Kirk Alyn** as the first actor to portray Superman on the screen.
- **It was the most profitable movie serial in movie history.**
- In 1950, a sequel serial *Atom Man vs. Superman* was released.
- Each serial had 15 chapters for a total of 30 chapters.
- **29 of the 30 movie serial chapters have scenes filmed in Chatsworth.** We have published those scenes on a [YouTube Playlist](#) on our YouTube channel.



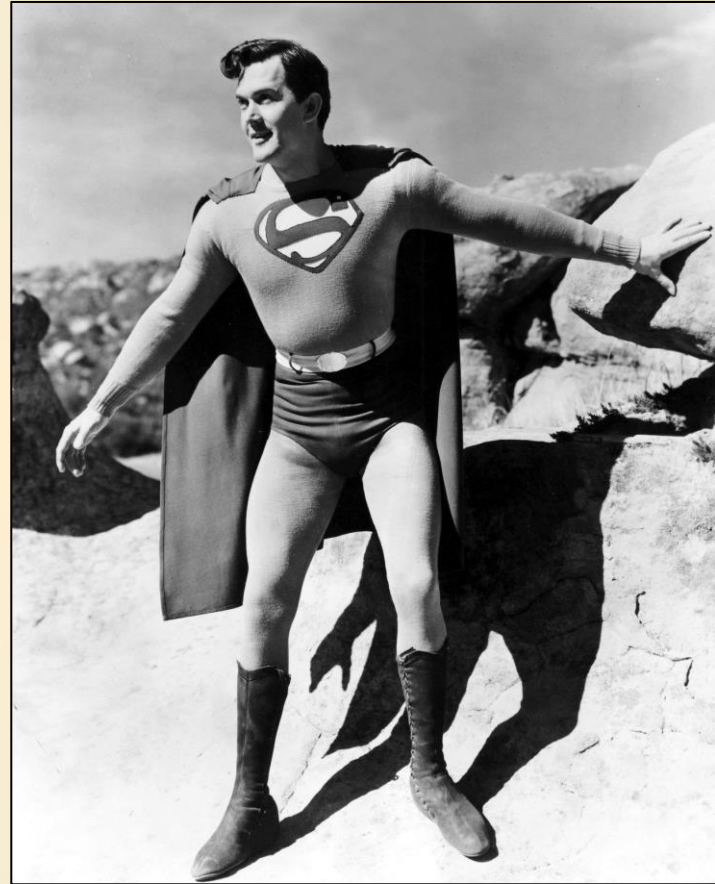
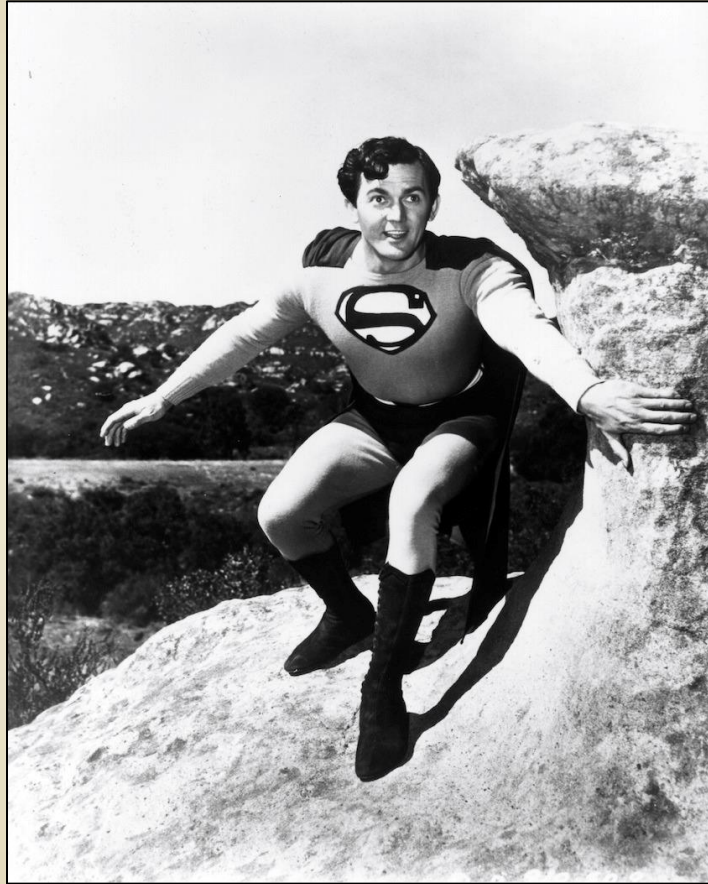
Kirk Alyn in a promotional photo
At [Saddlehorn Rock](#) Iverson Ranch



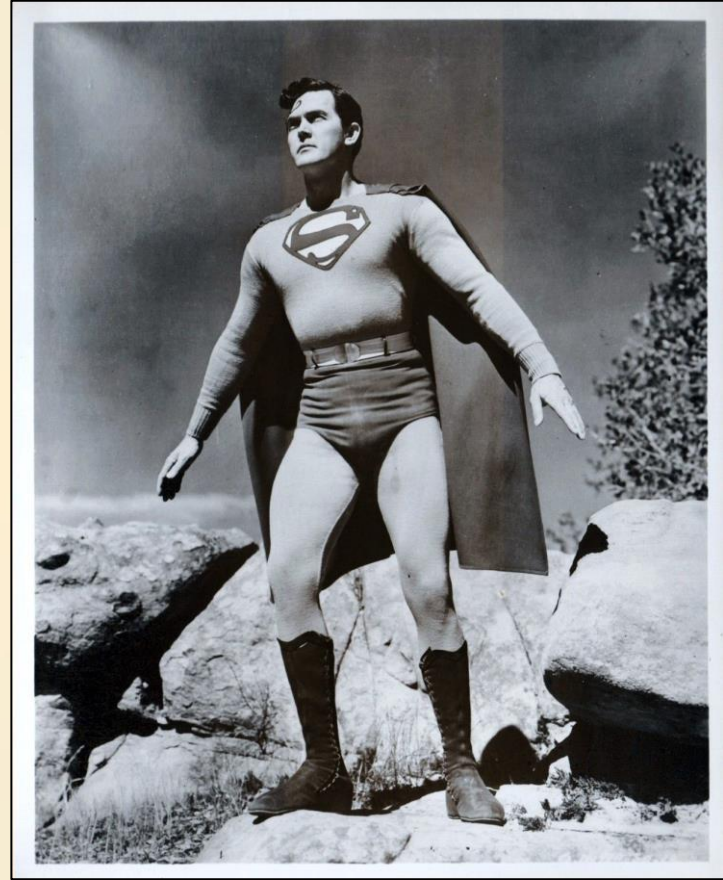
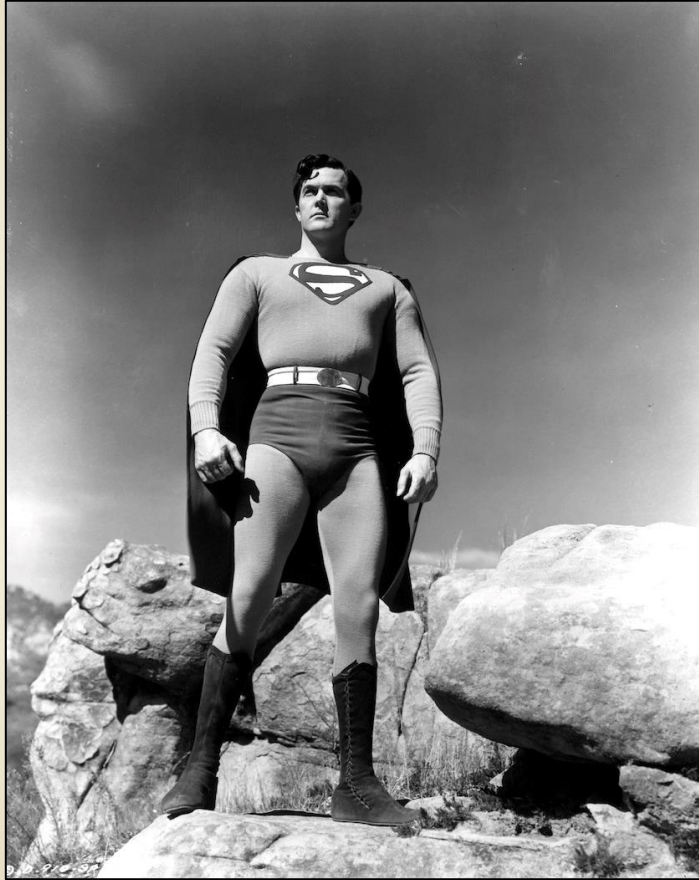
Kirk Alyn Photographs from the Jerry England Collection



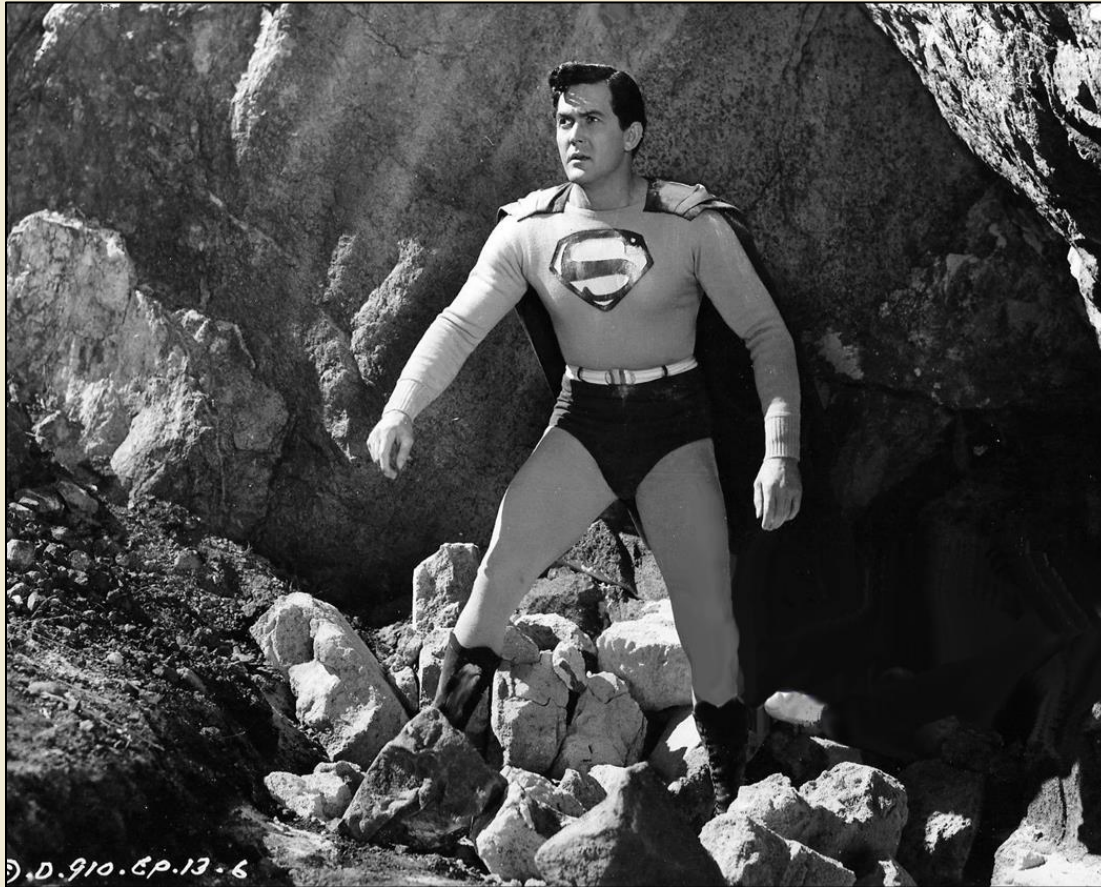
Kirk Alyn Photographs from the Jerry England Collection



Kirk Alyn Photographs from the Jerry England Collection



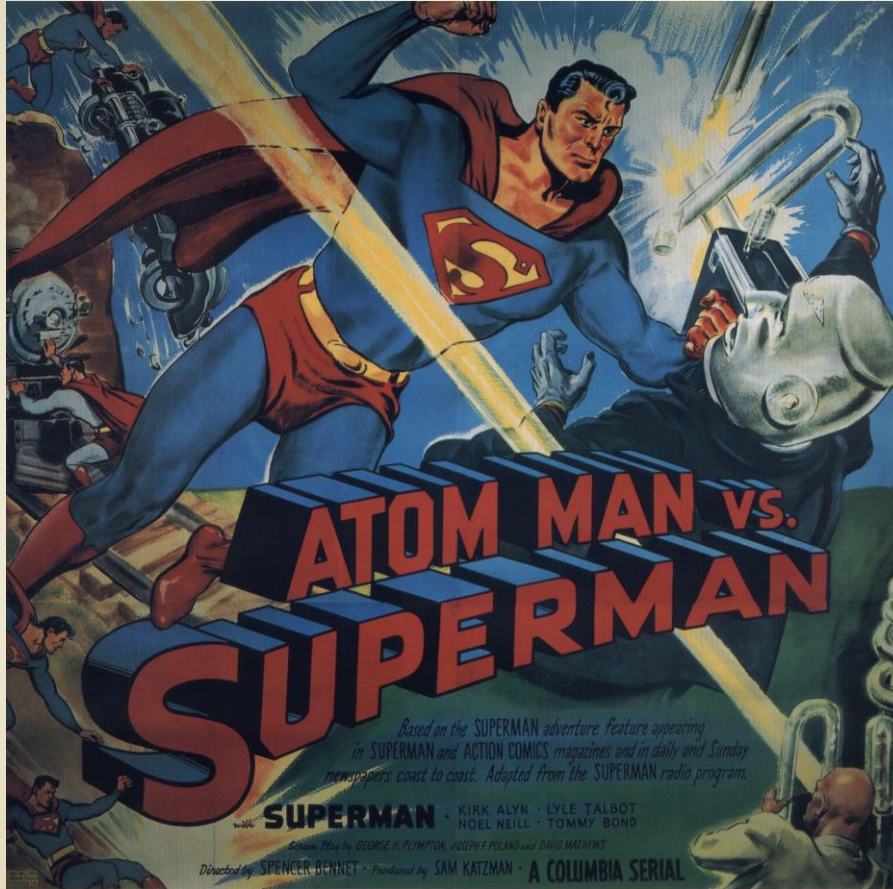
Kirk Alyn Photographs from the Jerry England Collection



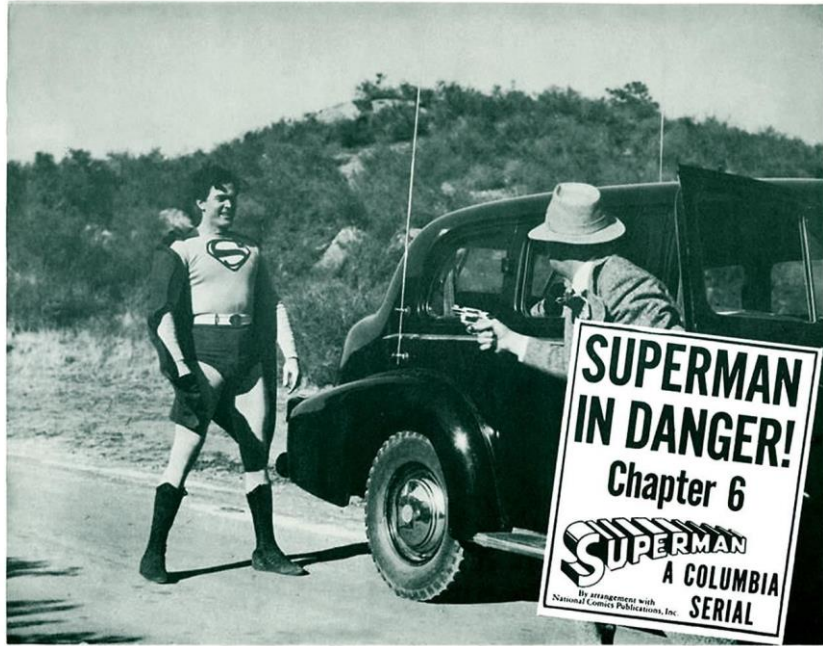
Kirk Alyn Photographs from the Jerry England Collection



Kirk Alyn Photographs from the Jerry England Collection



Kirk Alyn Photographs from the Jerry England Collection



Copyright 1948 Columbia Pictures Corp.

PRINTED IN U.S.A.

PROPERTY OF NATIONAL SCREEN SERVICE CORP. LICENSED FOR DISPLAY IN CONNECTION WITH PROMOTION OF THIS FEATURE. ALL OTHER RIGHTS RESERVED IMMEDIATELY. 48/CB21



By Arrangement with National Comics Publications, Inc.

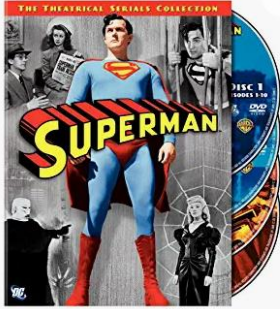
Kirk Alyn Photographs from the Jerry England Collection



Superman Serials: The Complete 1948 & 1950 Collection

Today you can buy all 30 episodes on DVD at Amazon for \$25, or you can buy each episode individually on Prime Video

Amazon's Choice



SUPERMAN SERIALS: 1948 & 1950 COLL.(DVD)

★★★★☆ ~ 453


DVD

\$24⁹⁹ ~~\$29.98~~

✓prime One-Day
FREE delivery **Tomorrow, Jan 15**
Or FREE delivery **Overnight 4 AM - 8 AM** on \$25 of qualifying items

More Buying Choices
\$9.73 (24 used & new offers)

- Starring: Kirk Alyn , Noel Niell and Tommy Bond



Superman Serials: The Complete 1948 & 1950 Collection

1948 | NR (Not Rated) | CC

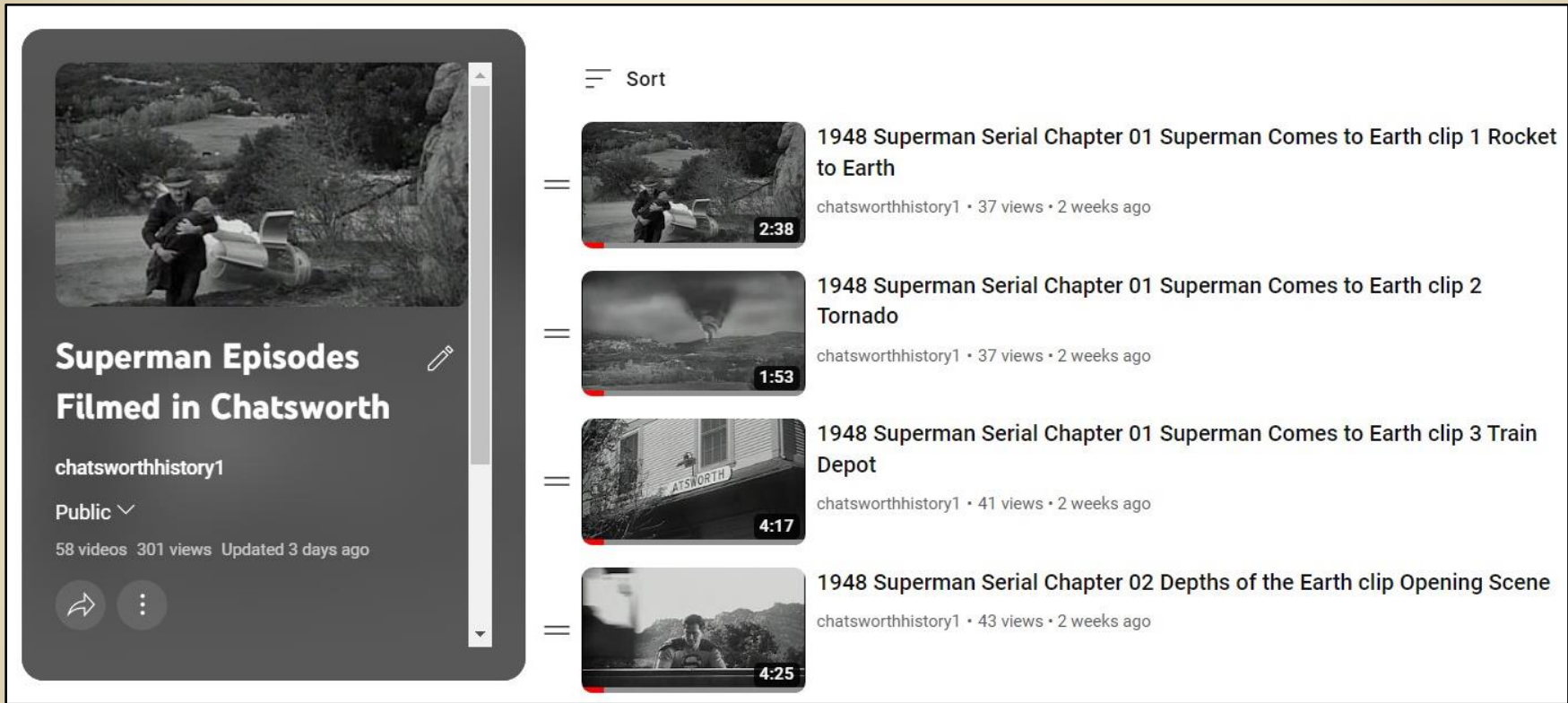
★★★★☆ ~ 80

Prime Video

\$1⁹⁹ to buy episode
\$29.99 to buy season

- Starring: Kirk Alyn , Noel Neill , Tommy Bond and P
- Directed by: Spencer Gordon Bennet and Thomas C

Superman Episodes Filmed in Chatsworth



The image shows a screenshot of a YouTube playlist. On the left is a large video player thumbnail for the playlist, titled "Superman Episodes Filmed in Chatsworth" by "chatsworthhistory1". The playlist is public and has 58 videos, 301 views, and was updated 3 days ago. On the right is a list of four video clips from the 1948 Superman Serial, each with a thumbnail, title, and view information.

Sort

- 1948 Superman Serial Chapter 01 Superman Comes to Earth clip 1 Rocket to Earth**
chatsworthhistory1 • 37 views • 2 weeks ago
2:38
- 1948 Superman Serial Chapter 01 Superman Comes to Earth clip 2 Tornado**
chatsworthhistory1 • 37 views • 2 weeks ago
1:53
- 1948 Superman Serial Chapter 01 Superman Comes to Earth clip 3 Train Depot**
chatsworthhistory1 • 41 views • 2 weeks ago
4:17
- 1948 Superman Serial Chapter 02 Depths of the Earth clip Opening Scene**
chatsworthhistory1 • 43 views • 2 weeks ago
4:25

[58 videos of clips from Superman Episodes on YouTube](#)

A review of some of the Superman Scenes

- Over the years, the many unique rock formations of Iverson Ranch have been “named” by the Iverson family and subsequent movie historians, for either the descriptive nature of the feature, or the famous actor or movie that is associated with it. Examples are the Tower and the Sphinx, and Lone Ranger Rock.
- Many thanks to Dennis Liff who provided details of the rock structures and shooting locations identified in each scene. We have provided **highlighted links** identifying further filming information and location for each scene that follows, with links from Dennis’ website.

1948 Superman Serial Screenshots in Chatsworth



Chapter 1 - Rocket near big rock, probably the "Molar", which is still there near Kanaina Ct. Looking north. Johnson Motorway on the hillside in the background.



Chapter 1 –Taken nearby the Rocket shot, on the Upper Iverson, looking northwest. The rocky bluffs on the left are above Fern Ann Falls neighborhood.

1948 Superman Serial Screenshots in Chatsworth



Chapter 1 – Train Depot on west side of the tracks from today's Train Depot



Chapter 2 – Train tracks looking north from Depot. Water tank is upper center at Devonshire.

1948 Superman Serial Screenshots in Chatsworth



Chapter 3 – Superman flying east to Stoney Point from the [Camera Mount](#) in the Garden of the Gods



Chapter 3 – cartoon Superman landing in the Garden of the Gods, between the [Sphinx](#), on the left, and [Tower Rock](#), on the right. Cactus Hill is visible in the background, looking north.

1948 Superman Serial Screenshots in Chatsworth



Chapter 3 – the Hangover Shack, leaning against [Hangover Rock](#), looking north. Oat Mountain in the distance. East of Golden Canyon Ct on private property.

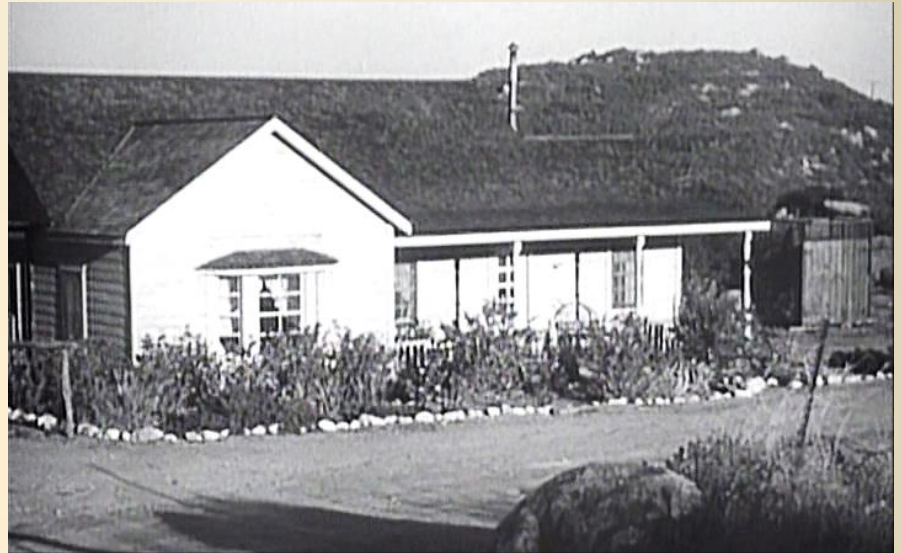


Chapter 3 – Superman ready to fly at Sphinx Rock at Garden of the Gods, looking north.

1948 Superman Serial Screenshots in Chatsworth



Chapter 5 – looking northeast along what was then called Iverson Ranch Road, the main road through the Lower Iverson. The [Iverson](#) family's residential area (off of Iverson Lane) is hidden behind the clumps of trees in the background.



Chapter 7 – looking approximately southeast showing the ranch house that was part of the Middle Iverson Ranch Set. The hill in the background is known as East Hill, and can be found today immediately to the north of the residential complex on Poema Place known as Vistas at Indian Oaks.

1948 Superman Serial Screenshots in Chatsworth



Chapter 8 – Upper Iverson and the gargoyle-like rock at top center is known as [Wrench Rock](#), northeast of Kanaina Ct. The shot is taken looking west.



Chapter 8 – slightly west of the previous shot, Upper Iverson, looking north to Oat Mountain, showing the concrete bridge that was originally part of the road to the homestead properties north of the Iverson homestead, including the George Jones property.

1948 Superman Serial Screenshots in Chatsworth



Chapter 10 – Old Santa Susana Pass Road looking west, just south of today’s Meraj Academy. Garden of the Gods and other parts of the Iverson Ranch visible in the background



Chapter 11 – Superman changes next to [Bigfoot Rock](#), near Middle Iverson Ranch set. looking southeast

1948 Superman Serial Screenshots in Chatsworth



Chapter 13 – Car traveling southwest along Iverson Ranch Road, camera looking east, [Batman Rock](#) (south of Horizon Place) along the right edge of the shot.



Chapter 15 – the Hangover Shack, leaning against [Hangover Rock](#), looking north. Oat Mountain in the distance. East of Golden Canyon Ct on private property.

1950 Superman Serial Screenshots in Chatsworth



Chapter 1 – Iverson Gorge (today's Red Mesa Rd), with car headed north in an area that was buried under dirt to build the condos. Car is passing "[Bald Knob](#)," which was destroyed during condo development. Lone Ranger Rock visible at top center, but not the usual angle.



Chapter 3 – Looking west to Pyramid Peak in the Santa Susana Mountains. Car is traveling northeast along Iverson Ranch Road through the Upper Gorge, in an area that is now filled with condos. A seasonal creek flowed through this area, necessitating the buttressing along with a culvert.

1950 Superman Serial Screenshots in Chatsworth



Chapter 5 – Superman saves car at Camera mount in Garden of the Gods, which overlooks what today is Redmesa Road (but it wasn't built yet, and would not be visible from this angle even today). Camera looks east to Nyoka Cliff.



Chapter 5 – Same location, with camera looking southeast to Stony Point.

1950 Superman Serial Screenshots in Chatsworth



Chapter 5 – Northbound Train before Tunnel 27 just north of Chatsworth Park North, watchman waving.



Chapter 5 – Southbound Train at the curve below Red Mesa Road, heading to Tunnel 28. Camera looking west with Pyramid Peak in the distance.

1950 Superman Serial Screenshots in Chatsworth



Chapter 5 – Car heading northeast on an obscure back road on the Iverson Ranch near the Middle Iverson Ranch Set



Chapter 5 – Car heading north on the Old Iverson Ranch entrance road, today among the condos near the cul de sac at the west end of Redmesa Road. Rockridge/Sunset/Elders Peak top middle

1950 Superman Serial Screenshots in Chatsworth



Chapter 6 – Two sheds on the Middle Iverson Ranch Set



Chapter 6 – Taken looking southeast, in what today is the Indian Hills Mobile Home Village. Most of the background rocks can still be found there today.

1950 Superman Serial Screenshots in Chatsworth

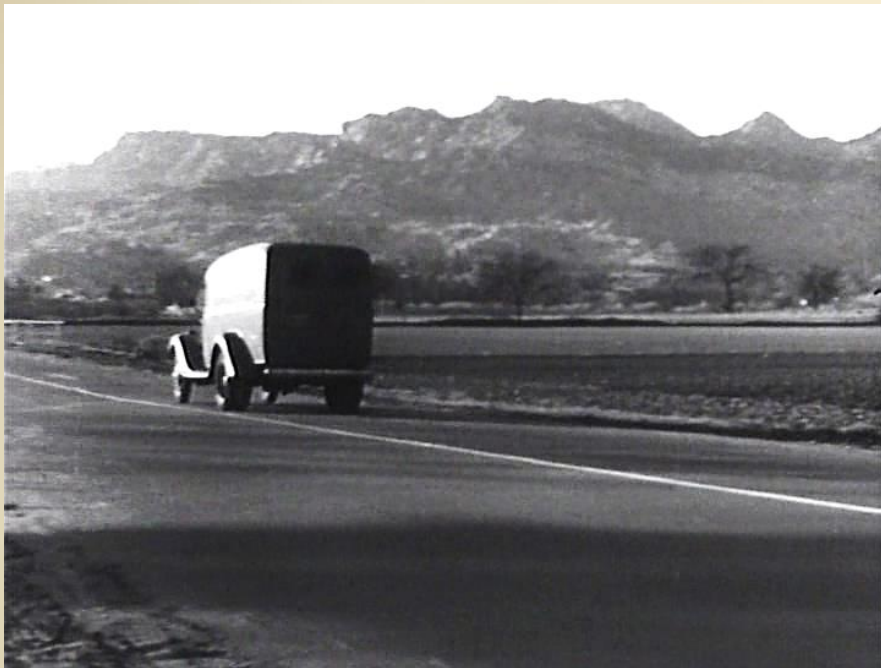


Chapter 7 – Indian Hills Mobile Home Village again, looking northeast. The small rock behind the truck is fake. The large rock at top left is still there today but is hidden behind mobile homes.



Chapter 10 – Jimmy and Superman north of train depot looking north, water tank at Devonshire middle left.

1950 Superman Serial Screenshots in Chatsworth



Chapter 13 – Truck heading west on Plummer to Lake Manor. The shot was taken immediately west of the corner of Topanga.



Chapter 13 – Truck heading south on Topanga, Devonshire and Stoney Point in back, Oat Mountain in the distance.

1950 Superman Serial Screenshots in Chatsworth



Chapter 14 – Garden of the Gods is visible at top right and the camera is looking south, with the car traveling north on one of several roads located north of Garden of the Gods and used for filming. Tower Rock is the one sticking up above and a little bit to the right of the car.



Chapter 14 – Indian Hills Mobile Home Village, near where the swimming pool is today, looking south, with [Mushroom Rock](#) at top center.

1953 Adventures of Superman Screenshots in Chatsworth

- The 1952 to 1958 *Adventures of Superman* television show had six episodes with scenes filmed in Chatsworth.
- All of the scenes were in Season 2, and were shown in 1953.
- The scenes were not as extensive as the scenes in the 1948 and 1950 movie serials, but are also included at the end of the [YouTube Playlist](#)
- Episodes are available on ch. 151 Heroes and Icons, and can be purchased from Amazon.



Season 2, Ep 1 – Lois at South Rim of the Upper Iverson, looking approximately south. Overhanging rock on the left of the frame is known as “[Gold Raiders Rock](#),” and it’s not nearly as large as it’s made to look here. The overhanging rock on top was cemented in place by Joe Iverson, and remains there today. This is a really unusual angle. Northeast of Kanaina Ct.

1953 Adventures of Superman Screenshots in Chatsworth



Season 2, Ep 2 – Superman at Upper Iverson looking east, at [Wrench Rock](#), northeast of Kanaina Ct.



Season 2, Ep 3 – Same area as [Wrench Rock](#), looking approximately east, with [Gold Raiders Rock](#) visible directly above Clark Kent. All of these rocks are still there.

1953 Adventures of Superman Screenshots in Chatsworth



Season 2, Ep 3, 4 & 9 – The same scene was used in three episodes. Superman changes to his uniform, looking southeast. [Wrench Rock](#) appears on the right of the frame, although it's unrecognizable from this angle. Northeast of Kanaina Ct.



Season 2, Ep 12 – Still in the same area, looking southwest, with the Cliff in the background also known as the [T-Cliff](#). Northeast of Kanaina Ct.

1953 Adventures of Superman Screenshots in Chatsworth



Season 2, Ep 12 – Superman on an “asteroid” at the [“Reflecting Pool”](#), northeast of Kanaina Ct. Both shots are taken in the same place, and it’s the same area as the previous five shots. Superman is working inside a small reservoir that was sometimes filled with water and used as a pool for filming

Up next is the 20 minute 1948 Superman Serial

Episode 01 Superman Comes to Earth

Starring Kirk Alyn as Superman

To be followed by the first four minutes of

Episode 02 Depths of the Earth

1948
Episode 01
Superman
Comes to
Earth

Starring
Kirk Alyn
as
Superman

20 minutes

Up next is the first four minutes of

Episode 02 Depths of the Earth

To see if Superman can save Lois and Jimmy

The first four
minutes of

Episode 02
Depths of
the Earth

To see if
Superman
can save
Lois and
Jimmy

Sources / Acknowledgments

- Special thanks to Jerry England for sharing his Superman Photograph collection
- Special thanks to Dennis Liff for help with identifying the screenshots filmed in Chatsworth.
- Jerry England - website at <https://a-drifting-cowboy.blogspot.com/>. This site is searchable, and has over 600 posts relating to movie sites in and around Chatsworth
- Dennis Liff – website at iversonmovieranch.blogspot.com. This site is searchable, and has over 400 posts relating to movie sites in and around Chatsworth
- An Interactive Map of Filming sites at <https://iversonmovieranch.blogspot.com/search?q=interactive>

- Prepared by Ann & Ray Vincent in January 2023